

# Project Fact Sheet

## NILALEG

### “Namibia Integrated Landscape Approach for Enhancing Livelihoods and Environmental Governance to Eradicate Poverty” (NILALEG) Project



### Project Background

The Ministry of Environment, Forestry and Tourism (MEFT) in partnership with the United Nations Development Programme (UNDP) is implementing the “*Namibia Integrated Landscape Approach for Enhancing Livelihoods and Environmental Governance to eradicate poverty*” (NILALEG). The project which was officially launched on the 10<sup>th</sup> of July 2020 in Ondangwa is expected to put in place 5 multi-stakeholder coordination structures in focal landscapes to implement natural resource management solutions with 20,818 direct beneficiaries (at least 50% female) across 5 landscapes. Regional Inception meetings were held in November and December 2020 to create awareness on the project and validate the project work plan.

### Financing

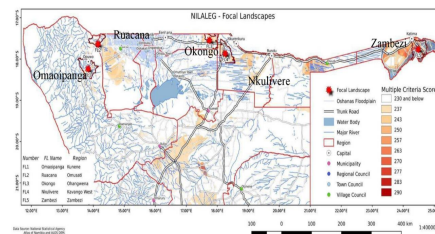
GEF Trust Fund through the United Nations Development Programme

### Duration

2019 – 2025 (6 years)

### Location

Namibia’s rural landscapes namely: Omaoipanga landscape (Kunene region), Nkulivere landscape (Kavango west region), Ruacana landscape (Kunene and Omusati regions), Okongo landscape (Ohangwena region), and Zambezi landscape (Zambezi region)



### Project budget

Total budget: USD 10 million

### Project Partners

Implementing Partner: Ministry of Environment, Forestry & Tourism

### Responsible Parties for delivering components of work:

Environmental Investment Fund of Namibia  
University of Namibia

### Beneficiaries

The targeted beneficiaries are the following Community Based Organizations (CBOs) from the focal landscapes:

- **Gazetted/Registered** Communal Conservancies and Community Forests, Farmer’s Associations, Women’s Groups, Youth Groups and other Community based organizations

### What does NILALEG Project aim to achieve?

- The key development challenge to which this project responds to is the need for integrated management of Namibia’s rural landscapes, to reverse environmental degradation and maximize sustainable livelihoods based on nature. Without such an approach, the focal landscapes will see increased poverty and inequality, with a continuous decline in forest cover, and attendant loss of biodiversity, soil fertility and carbon sequestration. Therefore, an effective multi-stakeholder approach to integrated landscape management is vital if Namibia is to meet its global environmental obligations and national development goals, addressing poverty and environmental degradation, and achieving inclusive and sustainable economic growth in the long run.

### What are the project objectives?

- To promote an integrated landscape management approach in key agricultural and forest landscapes, reducing poverty through sustainable nature-based livelihoods, protecting biodiversity and restoring forests as carbon sinks, and promoting Land Degradation Neutrality.

### Project Proposal link

<https://www.thegef.org/project/namibia-integrated-landscape-approach-enhancing-livelihoods-and-environmental-governance>

## Project components and outputs

The project activities will be implemented through 4 complementary components:

<p style="text-align: center;"><b>Component 1</b></p> <p style="text-align: center;"><b>Strengthening institutional coordination and governance mechanisms for an integrated landscape management approach</b></p>	<p style="text-align: center;"><b>Component 2</b></p> <p style="text-align: center;"><b>Implementation of the integrated landscape management approach in target landscapes</b></p>
<p><b>Outputs</b></p> <ul style="list-style-type: none"> <li>➤ Intra-governmental coordination improved in the areas of land degradation, climate change and biodiversity</li> <li>➤ National monitoring system for land degradation, climate change and biodiversity</li> <li>➤ Nationally tailored methodology for measuring Carbon stocks</li> <li>➤ In-service training of agriculture and forestry extension officials</li> <li>➤ Inspection and enforcement capacity to prevent poaching, illegal forest clearing, illegal mining and infrastructure development</li> </ul>	<p><b>Outputs</b></p> <ul style="list-style-type: none"> <li>➤ Establishment and capacity development of multi-stakeholder coordination structures in five target landscapes of approx. 20,000 ha each</li> <li>➤ Demarcation of two regional forest reserves of 10,000 ha and establish infrastructure for sustainable management and restoration</li> <li>➤ Sustainable forest management plans for new Community Forests across 3,000 ha in target landscapes</li> <li>➤ Restoration of 10,000 hectares of forested land through piloting a public works programme for landscape restoration</li> <li>➤ Extension support to promote agroforestry and climate-smart agriculture, across 15,000 ha</li> <li>➤ Nature-based enterprise development (tourism, value addition, processing of natural products etc.)</li> <li>➤ Small grants facility for integrated landscape management</li> </ul>
<p style="text-align: center;"><b>Component 3</b></p> <p style="text-align: center;"><b>Sustainable financing for implementation and upscaling of the integrated landscape management approach</b></p>	<p style="text-align: center;"><b>Component 4</b></p> <p style="text-align: center;"><b>Knowledge management, monitoring and evaluation, gender and impact assessment</b></p>
<p><b>Outputs</b></p> <ul style="list-style-type: none"> <li>➤ Valuation of ecosystem services in each of the target landscapes</li> <li>➤ Support to at least 40 CBOs in target landscapes to prepare proposals to access grants</li> <li>➤ Access to information on investment opportunities and micro-credit business support improved</li> <li>➤ Scale-up of SFM approach through an annual Landscape Management Dialogue</li> <li>➤ Scale-up of a public works programme for landscape restoration</li> <li>➤ Explore a community-based national insurance scheme (against climate change losses and human- wildlife conflict)</li> </ul>	<p><b>Outputs</b></p> <ul style="list-style-type: none"> <li>➤ Partnering with tertiary and research institutions for longitudinal studies on project impact (beyond outcome level)</li> <li>➤ Implementing gender action plan and gender impact study</li> <li>➤ Knowledge sharing for replication of best practice locally, nationally and internationally</li> <li>➤ Public awareness, advocacy, communications and knowledge management for project</li> <li>➤ Project monitoring and evaluation and sustainability plan, for achievement of all project outcomes</li> </ul>

## Environmental Investment Fund of Namibia Scope of Work:

<p style="text-align: center;"><b>Component 2</b></p> <p style="text-align: center;"><b>Implementation of the integrated landscape management approach in target land scapes</b></p>	<p style="text-align: center;"><b>Component 3</b></p> <p style="text-align: center;"><b>Sustainable financing for implementation and upscaling of the integrated landscape management approach</b></p>
--	--

<p>Activities</p> <p>Grant facility for integrated landscape management approach in the focal landscapes established and a total of <b>30 grants</b> awarded in the following investment areas:</p> <ul style="list-style-type: none"> <li>➤ Agroforestry</li> <li>➤ Sustainable crop/rangeland management</li> <li>➤ Nature-based enterprises</li> </ul> <p>Individual Grant sizes:  <b>USD 40 000 – USD 46 000</b></p> <ul style="list-style-type: none"> <li>➤ Grant/project duration: <b>1 to 2 years</b></li> </ul>	<p>Activities</p> <ul style="list-style-type: none"> <li>➤ Scale-up of Integrated Landscape Management approach and nature-based enterprises through sustainable finance mechanisms</li> <li>➤ Scale-up of a public works programme for landscape restoration, piloting charcoal-making from bush control on state-owned farms, with three pilot areas of 1,000 ha each</li> <li>➤ Targeted Scenario Analysis to <b>value ecosystem services</b></li> </ul>
--	---

### GEF Core Indicators:

- Area of land restored (hectares)
- Area of landscapes under improved practices (hectares; excluding protected areas)
- Greenhouse gas emissions mitigated (metric tons of carbon dioxide equivalent)
- Number of direct beneficiaries disaggregated by gender as co-benefit of GEF investment

This project will contribute to the following Sustainable Development Goal (s): **SDGs**



### Key Contacts

#### Chief of Operations:

Mr. Karl Mutani Aribeb, Department: Operations, Environmental Investment Fund of Namibia, Tel: +264 61 431 7701, E-mail: [karibeb@eif.org.na](mailto:karibeb@eif.org.na), P. O Box 28157, Auas Valley, Windhoek, Namibia

#### Project Manager:

Mr. Jonas Nghishidi, NILALEG Project Management Unit (PMU), Ministry of Environment, Forestry and Tourism; E-mail: [jnghishidi@gmail.com](mailto:jnghishidi@gmail.com), P/Bag 13306, Windhoek.

#### NILALEG Project Coordinator:

Ms. Philadelphia Buys, NILALEG project Environmental Investment Fund of Namibia Tel: +264 61 431 7705; E-mail: [pbuys@eif.org.na](mailto:pbuys@eif.org.na), P.O Box 26157, Auas Valley, Windhoek,